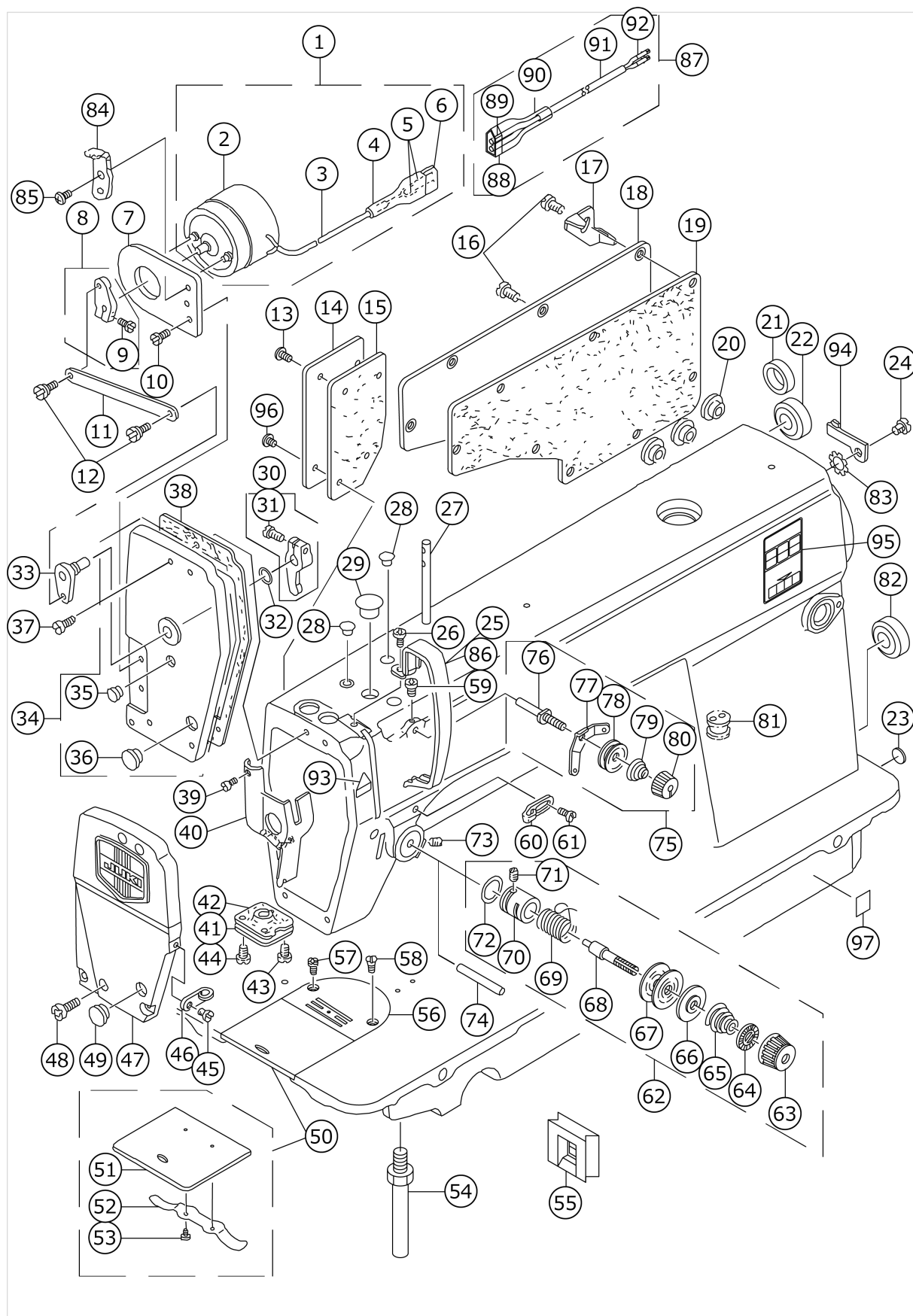


# DLU-5494N-7

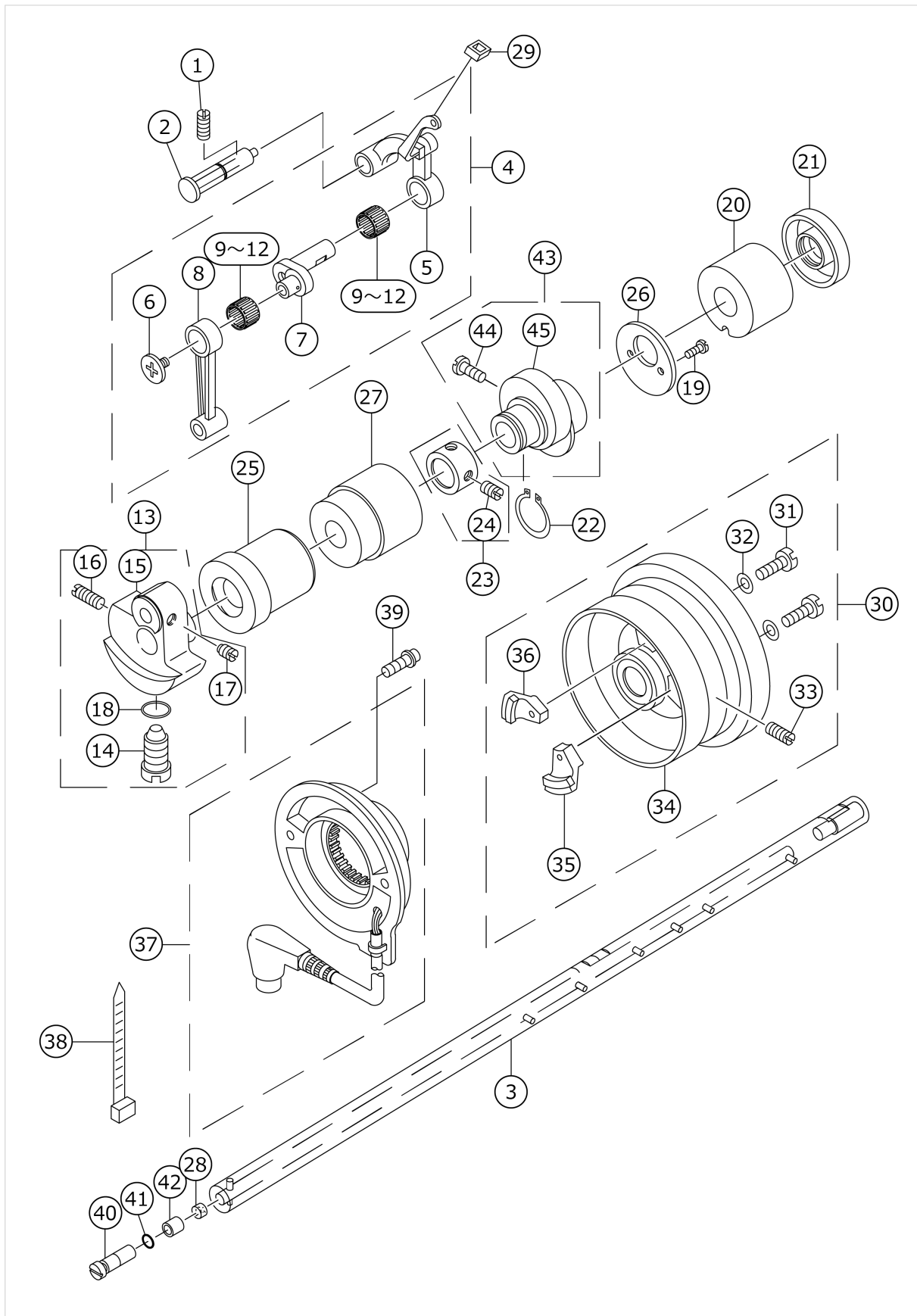
## MACHINE FRAME & MISCELLANEOUS COVER COMPONENTS



No.	品番	品名	備考	子部品	消耗品	個数
1	11281656	SOLENOID ASM.				1.00
2	11275906	SOLENOID		*		1.00
3	E8760452H00	TUBE		*		0.14
4	MAT81126T00	2-POLE PLUG COVER		*		1.00
5	HK03464000B	PIN CONTACT		*		2.00
6	HK034610020	2-POLE NYLON PLUG		*		1.00
7	11275807	SOLENOID BASE				1.00
8	11275757	SOLENOID ARM ASM.				1.00
9	SS6111040SP	SCREW 11/64-40 L=9.5		*		1.00
10	SS4120615SP	SCREW 3/16-28 L=6				1.00
11	11275609	SOLENOID LINK				1.00
12	SD0550212TP	HINGE SCREW D=5.5 H=2.1				2.00
13	SS4120915SP	SCREW 3/16-28 L=9				3.00
14	11255809	SIDE COVER				1.00
15	11200607	GASKET				1.00
16	SS4120915SP	SCREW 3/16-28 L=9				8.00
17	22954705	CORD FIXING METAL FITTING				1.00
18	22900401	WINDOW PLATE				1.00
19	11000619	GASKET				1.00
20	TA1470704R0	RUBBER PLUG				3.00
21	TA1470702R0	RUBBER PLUG				1.00
22	TA2101002R0	RUBBER PLUG				1.00
23	22901805	GROUND MARK				1.00
24	SS4120915SP	SCREW 3/16-28 L=9				1.00
25	22900609	THREAD TAKE-UP LEVER COVER				1.00
26	SS4120615SP	SCREW 3/16-28 L=6				1.00
27	B1114012000	THREAD GUIDE PIN				1.00
28	TA0850604R0	RUBBER PLUG				2.00
29	TA1250705R0	RUBBER PLUG				1.00
30	11275351	WALKING FOOT ADJUSTING ARM				1.00
31	SS6121010SP	SCREW 3/16-28 L=10		*		1.00
32	RO069180100	RUBBER RING				1.00
33	11275450	WALKING FOOT ARM SHAFT ASM.				1.00
34	11280369	FACE PLATE BASE ASM.				1.00
35	TA0750404R0	PLUG D=7.5 L=3.5		*		1.00
36	TA1250406R0	RUBBER PLUG D=12.5 L=4		*		1.00
37	SS4121415SP	SCREW 3/16-28 L=14				3.00
38	11200201	GASKET				1.00
39	SS6080410SP	SCREW 1/8-44 L=4				1.00
40	22900757	FACE PLATE OIL SHIELD ASM.				1.00
41	11200300	PRESSER BAR SUPPORT				1.00
42	11200409	GASKET				1.00
43	11200805	PRESSER BAR SUPPORT SCREW B				1.00
44	SS1120710SP	SCREW 3/16-28 L=6.5				2.00
45	SS6110610TP	SCREW 11/64-40 L=6				1.00
46	11331402	ARM THREAD GUIDE B				1.00
47	11280252	FACE PLATE ASM.				1.00
48	SS4120915SP	SCREW 3/16-28 L=9				2.00
49	TA1250406R0	RUBBER PLUG D=12.5 L=4				1.00
50	22901250	SLIDE PLATE ASM.				1.00

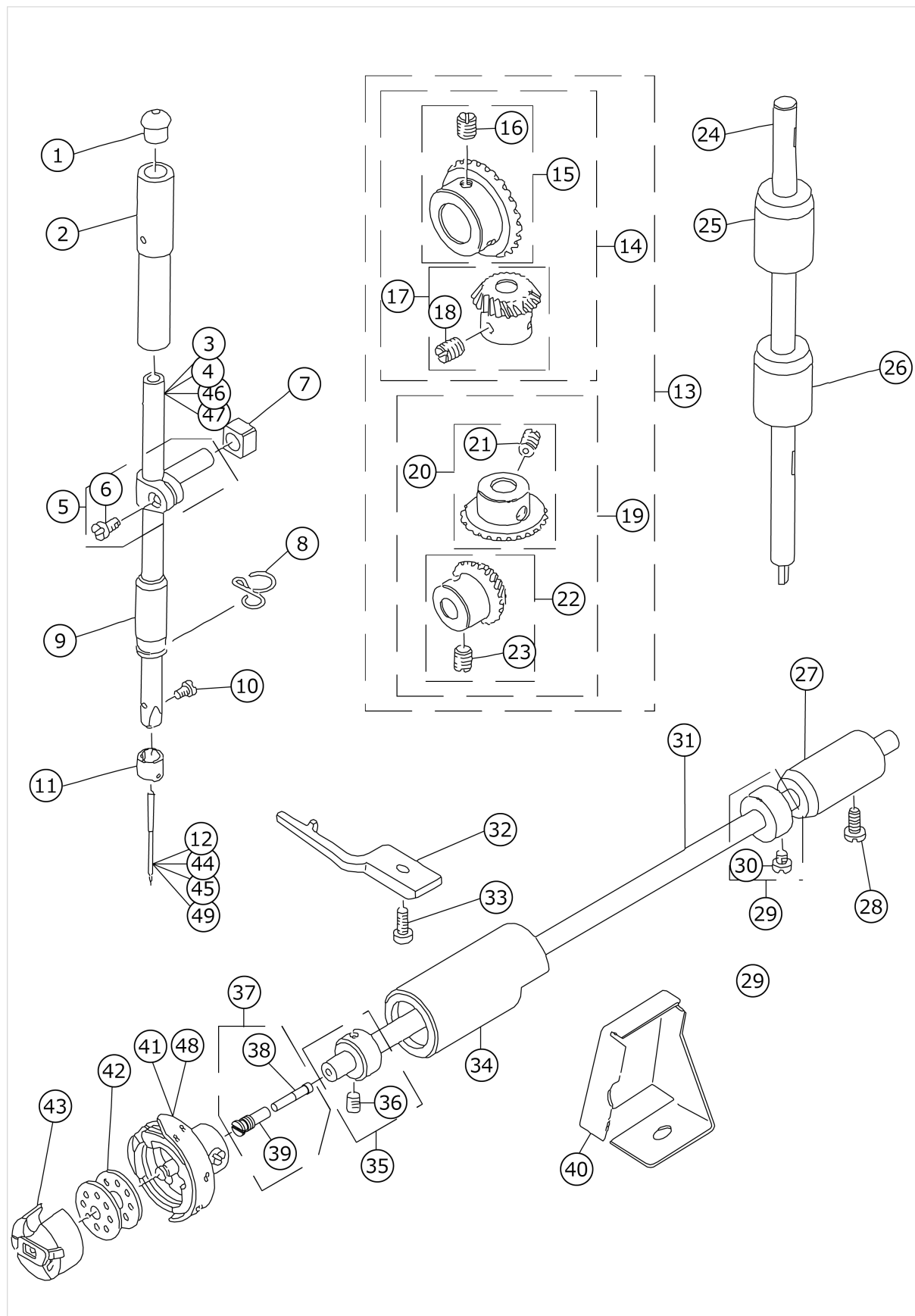
51	B1110012000	SLIDE PLATE		*		1.00
52	11001609	BED SLIDE SPRING		*		1.00
53	SS6060210SP	SCREW 3/32-56 L=1.9		*		2.00
54	22901003	BED SCREW STUD				4.00
55	22935407	BED OIL SHIELD RUBBER				1.00
56	B1109450B0B	THROAT PLATE B				1.00
57	B1191490000	SCREW	EXCHANGE PARTS			1.00
58	SS2110915SP	SCREW 11/64-40 L=8.5				2.00
59	SS4120615SP	SCREW 3/16-28 L=6				1.00
60	22920508	ARM THREAD GUIDE A				1.00
61	22921001	SCREW				1.00
62	11257359	THREAD TENSION ASM.				1.00
63	22921308	THREAD TENSION NUT		*		1.00
64	22921407	ROTATION STOPPER		*		1.00
65	22921704	THREAD TENSION SPRING A		*		1.00
66	22921803	DISK STOPPER		*		1.00
67	22921506	THREAD TENSION DISK		*		2.00
68	22921209	THREAD TENSION POST		*		1.00
69	22921605	THREAD TAKE-UP SPRING		*		1.00
70	11220209	TENSION POST SOCKET		*		1.00
71	SS8090410SP	SCREW 9/64-40 L=3.5		*		1.00
72	RO133170100	RUBBER RING		*		1.00
73	SS8150710SP	SCREW 15/64-28 L=7				1.00
74	B3118552C00	TENSION RELEASE PIN C				1.00
75	22945463	THREAD TENSION ASM. NO.1				1.00
76	22945414	THREAD TENSION POST		*		1.00
77	22945604	THREAD TENSION GUIDE		*		1.00
78	22945802	THREAD TENSION DISK		*		2.00
79	22945505	THREAD TENSION SPRING		*		1.00
80	22945703	THREAD TENSION NUT		*		1.00
81	40093432	MAGNET CORD RUBBER				1.00
82	TA2101002R0	RUBBER PLUG				1.00
83	WT0530002KS	TOOTHED WASHER D=5.3				1.00
84	11276102	SOLENOID LINK STOPPER				1.00
85	SS4120915SP	SCREW 3/16-28 L=9				2.00
86	11415205	THREAD TAKE-UP LEVER COVER(JE)	FOR JE			1.00
87	11281755	SOLENOID CABLE ASM.				1.00
88	HK034620020	2P PLUG		*		1.00
89	HK034630000	TERMINAL		*		2.00
90	MAT81126T00	2-POLE PLUG COVER		*		1.00
91	HW500070000	2-CORE CABTYRE CORD		*		1.23
92	HK03464000B	PIN CONTACT		*		2.00
93	CM300200001	ATTENTION SEAL				1.00
94	11030301	CABLE HOLDER				1.00
95	CM301300001	SAFETY LABEL				1.00
96	SS4120615SP	SCREW 3/16-28 L=6				1.00
97	40116677	GOST_SAFTY_LABEL_S	FOR JE			1.00

# MAIN SHAFT & THREAD TAKE-UP LEVER COMPONENTS



No.	品番	品名	備考	子部品	消耗品	個数
1	SS8151150SP	SCREW 15/64-28 L=10.5				1.00
2	11017357	THREAD TAKE-UP CRANK SHAFT ASM.				1.00
3	11202009	MAIN SHAFT				1.00
4	22918072	THREAD TAKE-UP LEVER COMPL.				1.00
5	22918064	THREAD TAKE-UP LEVER ASM.		*		1.00
6	22918304	LEFT SCREW		*		1.00
7	22918106	NEEDLE BAR CRANK		*		1.00
8	22906606	NEEDLE BAR CRANK ROD		*		1.00
9	22918403	NEEDLE BEARING A	SELECTIVE PART	*		2.00
10	22918502	NEEDLE BEARING B	SELECTIVE PART	*		2.00
11	22918601	NEEDLE BEARING C	SELECTIVE PART	*		2.00
12	22918700	NEEDLE BEARING D	SELECTIVE PART	*		2.00
13	40095789	COUNTER WEIGHT_LU ASM.				1.00
14	SS7681650TP	SCREW 9/32-28 L=16		*		1.00
15	11202116	COUNTERWEIGHT		*		1.00
16	SS8681650TP	SCREW 9/32-28 L=16		*		1.00
17	SS8660610TP	SCREW 1/4-40 L=6		*		2.00
18	RO044240100	RUBBER RING		*		1.00
19	SS6090650SP	SCREW 9/64-40 L=6				2.00
20	11002409	MAIN SHAFT BUSHING REAR				1.00
21	40105231	OIL SEAL				1.00
22	RC1850001KP	SNAP RING 18.5				1.00
23	22904155	MAIN SHAFT THRUST COLLAR ASM.				1.00
24	SS8660610TP	SCREW 1/4-40 L=6		*		2.00
25	11202207	MAIN SHAFT BUSHING FRONT				1.00
26	11008109	THRUST COLLAR				1.00
27	11202306	BUSHING INTERMEDIATE				1.00
28	B1226552000	ROLLER FELT				1.00
29	22919203	OIL PROTECTING RUBBER				1.00
30	11256252	HAND WHEEL ASM.				1.00
31	SS6111210SP	SCREW 11/64-40 L=12		*		1.00
32	WP0450801SD	WASHER 4.5X10X0.8		*		2.00
33	SS8151550SP	SCREW 15/64-28 L=15		*		2.00
34	11071453	HAND WHEEL ASM.		*		1.00
35	M40071100AA	MAGNET FITTING BASE A ASM.		*		1.00
36	11225356	MAGNET BASE ASM.		*		1.00
37	22937965	DYNAMO STATOR				1.00
38	HX000430000	CLIP				1.00
39	SL4051001MZ	SCREW M5 L=9.6				2.00
40	B1213552000A	OIL ADJUSTING PIN				1.00
41	RO029180100	RUBBER RING				1.00
42	B1215552000	OIL ADJUSTING COLLAR				1.00
43	11008059	FEED DRIVE ECCENTRIC CAM ASM.				1.00
44	SS6661110SP	SCREW 1/4-40 L=11		*		2.00
45	11008000	FEED DRIVE ECCENTRIC CAM		*		1.00

# NEEDLE BAR, UPRIGHT SHAFT & HOOK DRIVING SHAFT COMPONENTS

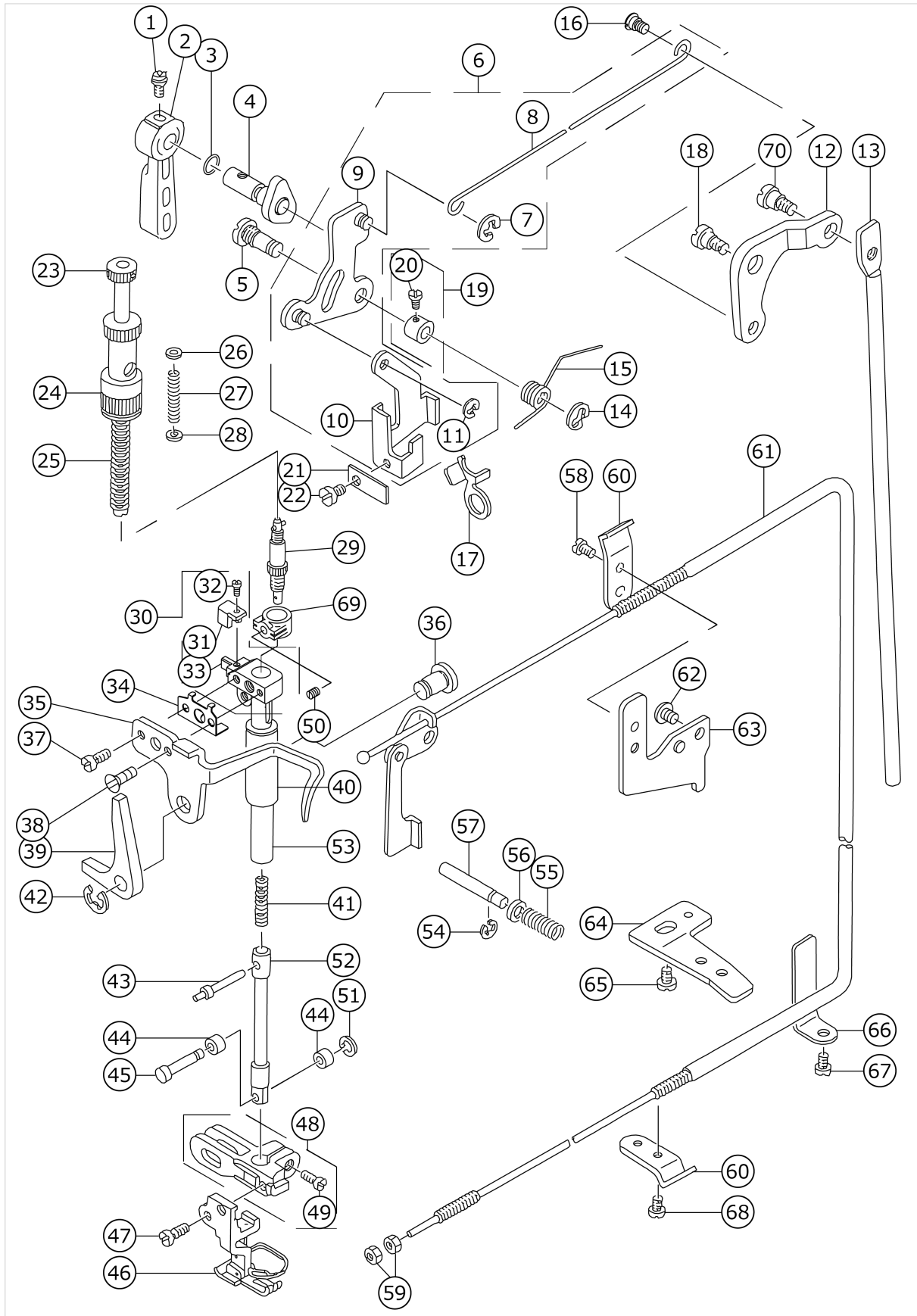


No.	品番	品名	備考	子部品	消耗品	個数
1	22901409	NEEDLE BAR UPPER BUSH CAP				1.00
2	22906101	NEEDLE BAR BUSHING UPPER				1.00
3	11035003	NEEDLE BAR	FOR DLU-5494N-7-0B			1.00
4	11226107	NEEDLE BAR	FOR DLU-5494N-7-WB			1.00
5	22906457	NEEDLE BAR HOLDER ASM.				1.00
6	SS6090670TP	SCREW 9/64-40 L=6		*		1.00
7	40090058	SLIDE BLOCK				1.00
8	22920805	NEEDLE BAR THREAD GUIDE				1.00
9	22906200	NEEDLE BAR BUSHING LOWER				1.00
10	SS7080510TP	SCREW 1/8-44 L=4.5				1.00
11	11226016	NEEDLE BAR THREAD GUIDE				1.00
12	MDB100B1100	NEEDLE DBX1 #11	FOR JH & USE IN JAPAN			1.00
13	B13061550C0	GEAR & PINION ASM.				1.00
14	B13061550B0	GEAR & PINION ASM. UPPER		*		1.00
15	B13050120A0	GEAR ASM.		*		1.00
16	SS8660810TP	SCREW 1/4-40 L=8		*		2.00
17	B13061550A0	PINION ASM.		*		1.00
18	SS8660810TP	SCREW 1/4-40 L=8		*		2.00
19	B13071550B0	GEAR & PINION ASM. LOWER		*		1.00
20	B13071550A0	GEAR ASM. LARGE		*		1.00
21	SS8660810TP	SCREW 1/4-40 L=8		*		2.00
22	B13081550A0	PINION ASM.		*		1.00
23	SS8660810TP	SCREW 1/4-40 L=8		*		2.00
24	22905004	UPRIGHT SHAFT				1.00
25	11004306	BUSHING B UPPER				1.00
26	11004207	UPRIGHT SHAFT BUSHING LOWER				1.00
27	22916308	HOOK DRIVING SHAFT BUSH REAR				1.00
28	SS4120915SP	SCREW 3/16-28 L=9				1.00
29	22917157	THRUST COLLAR ASM. REAR				1.00
30	SS6110420TP	SCREW 11/64-40 L=4.8		*		2.00
31	22916001	HOOK DRIVING SHAFT				1.00
32	11038809	BOBBIN CASE HOLDER				1.00
33	SS4110915TP	SCREW 11/64-40 L=9				1.00
34	22916308	HOOK DRIVING SHAFT BUSH REAR				1.00
35	22917058	THRUST COLLAR ASM. FRONT				1.00
36	SS8110410TP	SCREW 11/64-40 L=3.5		*		2.00
37	22916555	OIL SEAL SCREW ASM.				1.00
38	11015906	OIL WICK		*		1.00
39	B1808552000	OIL SEAL SCREW		*		1.00
40	22942601	OIL SHIELD				1.00
41	11038650	HOOK ASM.	FOR JH & USE IN JAPAN			1.00
42	22932909	BOBBIN				1.00
43	11038759	BOBBIN CASE ASM.				1.00
44	MC200500750	NEEDLE 134 75	FOR JE			1.00
45	MDP500B1400	NEEDLE DPX5 #14	FOR JO			1.00
46	11240108	NEEDLE BAR	FOR DLU-5494N-7-WB (JE,JO)			1.00

47	11141207	NEEDLE BAR	FOR DLU-5494N- 7-0B (JE,JO)			1.00
48	11141355	HOOK ASM.				1.00
49	MDB100B1400	NEEDLE DBX1 #14				1.00



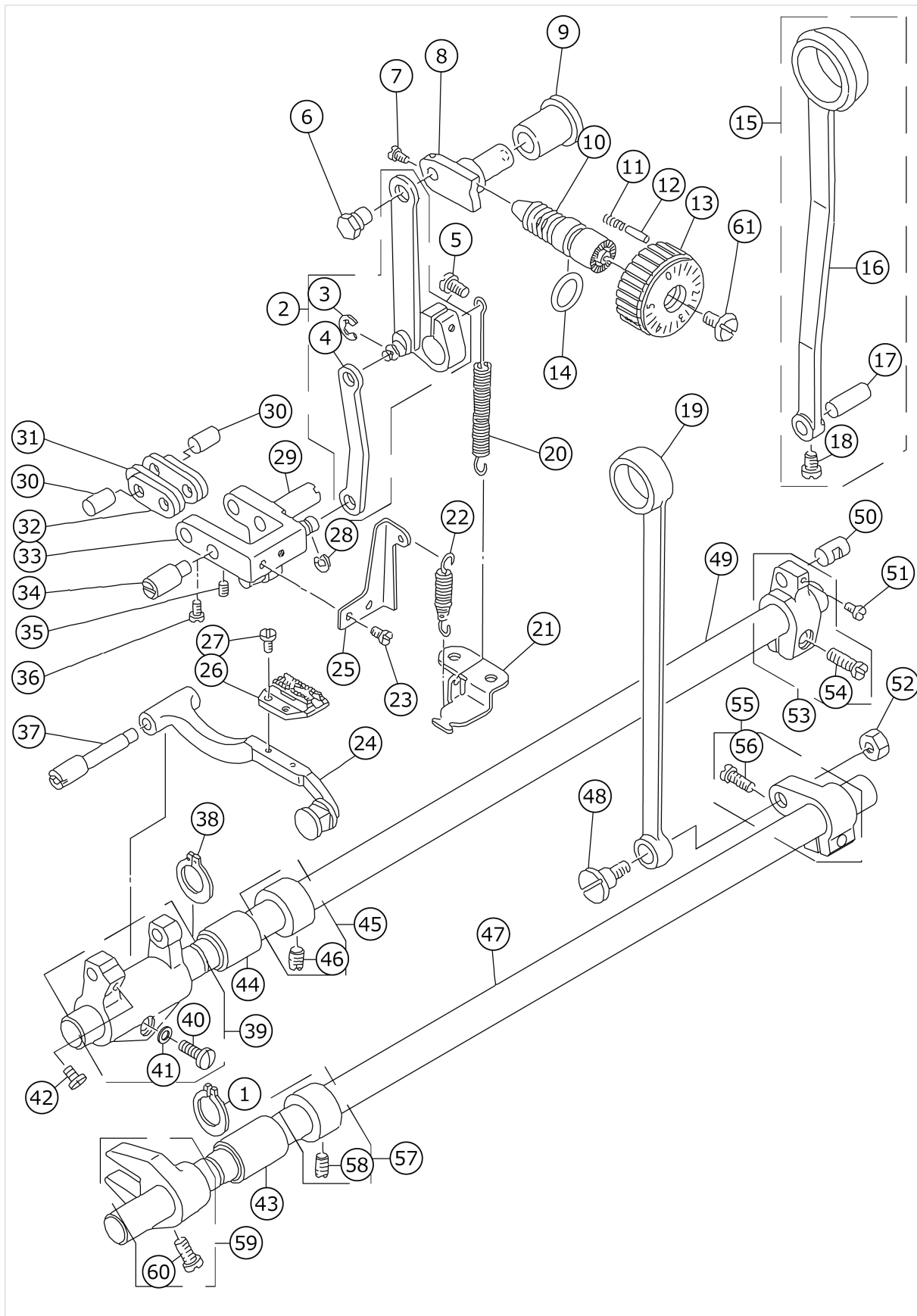
# HAND LIFTER COMPONENTS



No.	品番	品名	備考	子部品	消耗品	個数
1	B1521555000	SCREW				1.00
2	22907802	HAND LIFTER				1.00
3	RO037180100	RUBBER RING				1.00
4	22908552	HAND LIFTER CAM ASM.				1.00
5	11205218	LIFTING LEVER LINK SHAFT				1.00
6	11271053	LIFTING LEVER ASM.				1.00
7	RE0500000K0	E-RING		*		1.00
8	22908305	KNEE LIFTER SIDE ROD		*		1.00
9	22908156	LIFTING LINK ASM.		*		1.00
10	11271004	LIFTING LEVER		*		1.00
11	RE0500000K0	E-RING		*		1.00
12	11205309	LIFTING LEVER LINK				1.00
13	11205408	CONNECTING ROD				1.00
14	RE0500000K0	E-RING				1.00
15	11230802	SPRING				1.00
16	22908909	HINGE SCREW				1.00
17	11220100	TENSION RELEASE PLATE				1.00
18	SD0720331SP	HINGE SCREW D=7.24 H=3.3				1.00
19	CS064061ASP	THRUST COLLAR ASM.				1.00
20	SS7090620TP	SCREW 9/64-40 L=6.1		*		1.00
21	11271301	PRESSER PLATE				1.00
22	SS6110480SP	SCREW 11/64-40 L=4.3				1.00
23	11204559	PRESSER SPRING REGULATOR ASM.				1.00
24	11204609	NUT				1.00
25	B1505227000A	PRESSER SPRING				1.00
26	WP0650816SP	WASHER				1.00
27	11205002	GUIDE BAR SPRING				1.00
28	WP0661016SP	WASHER				1.00
29	11217353	CAP ASM.				1.00
30	11204161	PRESSER ROD HOLDER ASM.				1.00
31	11204211	BRACKET GUIDE		*		1.00
32	SS4080620TP	SCREW 1/8-44 L=6		*		1.00
33	11204112	PRESSER BAR GUIDE BRACKET		*		1.00
34	11204302	BRACKET PLATE				1.00
35	11271103	PRESSER BAR THREAD GUIDE				1.00
36	11271202	SHAFT PIN				1.00
37	SS7111810SP	SCREW 11/64-40 L=18				1.00
38	SS2090810SP	SCREW 9/64-40 L=7.5				1.00
39	11216801	DRIVING PRESSER ARM				1.00
40	11204401	BUSHING				1.00
41	11217601	WALKING FOOT SPRING				1.00
42	RE0400000K0	E-RING 4				1.00
43	11275005	DRIVING BAR PIN				1.00
44	11217213	ROLLER				2.00
45	11217114	ROLLER SHAFT				1.00
46	B1524491BB0	PRESSER FOOT ASM. B				1.00
47	SS6121220TP	SCREW 3/16-28 L=11.5				1.00
48	11215258	PRESSER BAR BASE ASM.				1.00
49	SS6121220TP	SCREW 3/16-28 L=11.5		*		1.00
50	SS8110422TP	SCREW 11/64-40 L=4				1.00

51	RC0260415KP	SNAP RING				1.00
52	11230117	DRIVING BAR				1.00
53	11204013	PRESSER BAR				1.00
54	RE0400000K0	E-RING 4				1.00
55	22920409	THREAD RELEASE PIN SPRING				1.00
56	11220308	THRUST WASHER				1.00
57	11220001	PIN				1.00
58	SS4110515SP	SCREW 11/64-40 L=5				1.00
59	NS6620310SP	NUT 3/16-32				2.00
60	22944508	WIRE PRESSER A				2.00
61	11230562	WIRE TUBE				1.00
62	SS4120615SP	SCREW 3/16-28 L=6				1.00
63	22944607	WIRE PRESSER BASE UPPER				1.00
64	22962807	WIRE PRESSER BASE B LOWER				1.00
65	SS7110740TP	SCREW 11/64-40 L=7				1.00
66	11046000	WIRE CABLE HOLDER				1.00
67	SS4120615SP	SCREW 3/16-28 L=6				1.00
68	SS4110515SP	SCREW 11/64-40 L=5				1.00
69	11205507	PRESSER ROD STOPPER				1.00
70	SD0600322SD	HINGE SCREW D=6 H=3.2				1.00

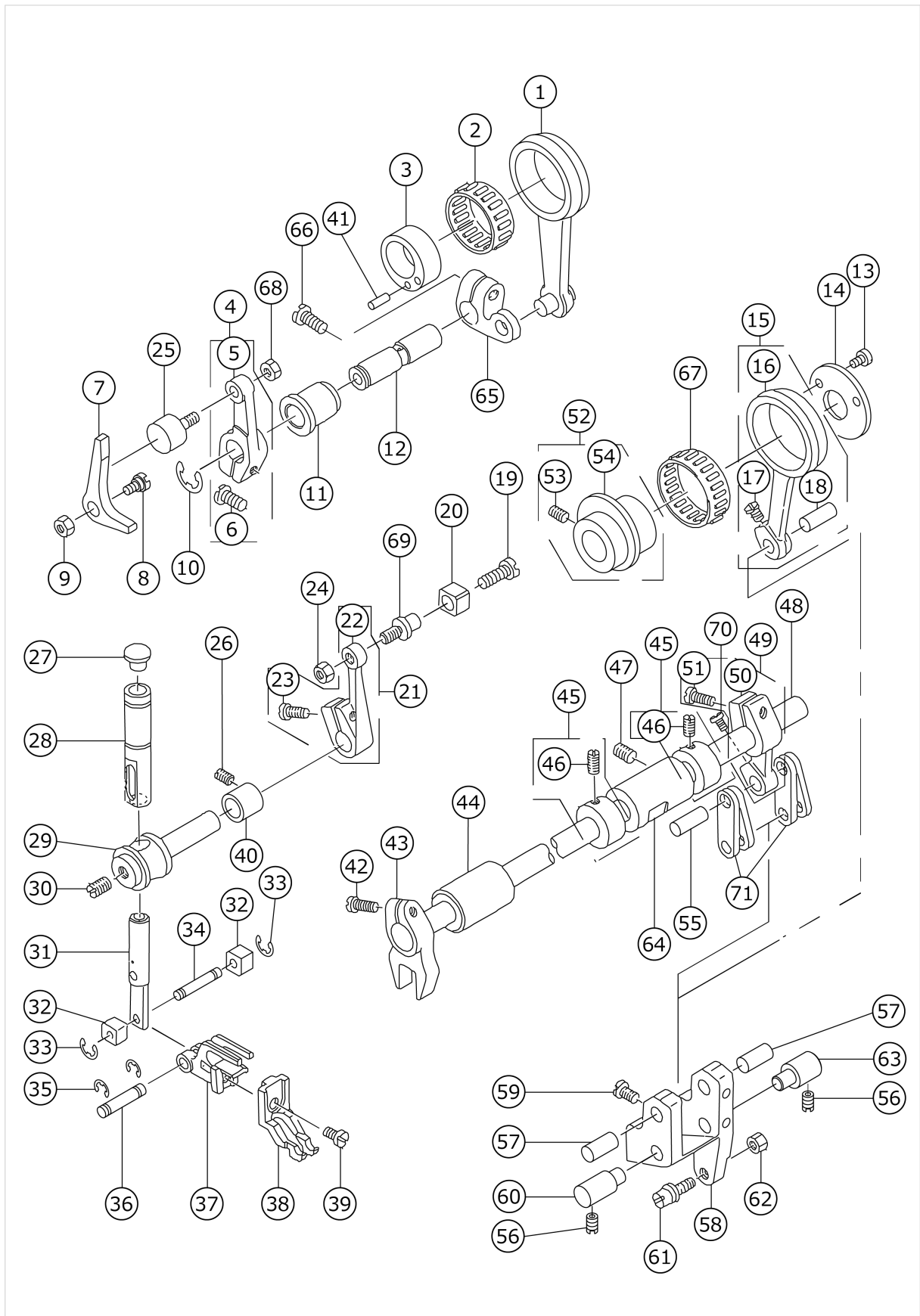
# FEED MECHANISM COMPONENTS



No.	品番	品名	備考	子部品	消耗品	個数
1	RC0150001KP	RETAINING RING 13.8				1.00
2	11206463	FEED CHANGING ARM ASM.				1.00
3	RE0500000K0	E-RING		*		1.00
4	11206208	CONNECTING ROD B		*		1.00
5	SS6121220TP	SCREW 3/16-28 L=11.5				1.00
6	11206307	FEED REGULATOR PIN				1.00
7	SS6090670TP	SCREW 9/64-40 L=6				2.00
8	11206406	FEED REGULATOR				1.00
9	11273406	FEED REGULATOR BUSHING				1.00
10	22911804	FEED REGULATOR SCREW				1.00
11	22912109	FEED REGULATOR PIN SPRING				1.00
12	22912000	FEED REGULATOR PIN				1.00
13	11071909	FEED DIAL				1.00
14	RO092270200	RUBBER RING				1.00
15	40080424	CONNECTING ROD ASM.				1.00
16	11206000	CONNECTING ROD		*		1.00
17	22911101	WALKING FOOT PIN C		*		1.00
18	SS6090620TP	SCREW		*		1.00
19	22915003	CONNECTING ROD				1.00
20	11010303	FEED REVERSE SPRING				1.00
21	11091907	FEED SPRING HOOK				1.00
22	11091204	ADJUST LINK SPRING				1.00
23	SS4110515SP	SCREW 11/64-40 L=5				2.00
24	22940753	FEED BAR ASM.				1.00
25	22941306	REGULATOR LINK SPRING HOOK				1.00
26	B1613450A00	FEED DOG A				1.00
27	SS4080620TP	SCREW 1/8-44 L=6				2.00
28	RE0500000K0	E-RING				1.00
29	40010395	ADJUSTING LINK FULCRUM SHAFT B				1.00
30	22910905	WALKING FOOT PIN A				2.00
31	40089548	CONNECTING LINK B				2.00
32	40093417	CONNECTING LINK A				2.00
33	22940951	FEED ADJUST LINK ASM.				1.00
34	22910806	ADJUST LINK FULCRUM SHAFT A				1.00
35	SS8150710TP	SCREW 15/64-28 L=7				1.00
36	SS6090620TP	SCREW				2.00
37	22940803	FEED BAR SHAFT				1.00
38	RC0150001KP	RETAINING RING 13.8				1.00
39	22940654	FEED ROCKER ASM.				1.00
40	SS7121410TP	SCREW 3/16-28 L=14		*		1.00
41	WP0480856SP	WASHER 4.8X8.4X0.8		*		1.00
42	SS7110740TP	SCREW 11/64-40 L=7				1.00
43	22913008	FEED ROCKER SHAFT BUSHING				1.00
44	22913008	FEED ROCKER SHAFT BUSHING				1.00
45	CS147121ASH	THRUST COLLAR ASM. D=14.72 W=12				1.00
46	SS8660610TP	SCREW 1/4-40 L=6		*		2.00
47	22915201	FEED DRIVING SHAFT				1.00
48	SD1000801SH	HINGE SCREW D=10 H=8				1.00
49	22912901	FEED ROCKER SHAFT				1.00
50	22911002	WALKING FOOT PIN B				1.00

51	SS6090620TP	SCREW				1.00
52	NS6680410SP	NUT 9/32-28				1.00
53	22910350	FEED ROCKER SHAFT CRANK ASM.				1.00
54	SS6121610SP	SCREW 3/16-28 L=15.5		*		1.00
55	11014156	REAR CRANK ASM.				1.00
56	SS7121610SP	SCREW 3/16-28 L=15.5		*		1.00
57	CS147121ASH	THRUST COLLAR ASM. D=14.72 W=12				1.00
58	SS8660610TP	SCREW 1/4-40 L=6		*		2.00
59	22915359	DRIVING SHAFT CRANK ASM.				1.00
60	SS7111120SP	SCREW 11/64-40 L=10.5		*		1.00
61	SS6121860SP	SCREW 3/16-28 L=18				1.00

# TOP FEED MECHANISM COMPONENTS

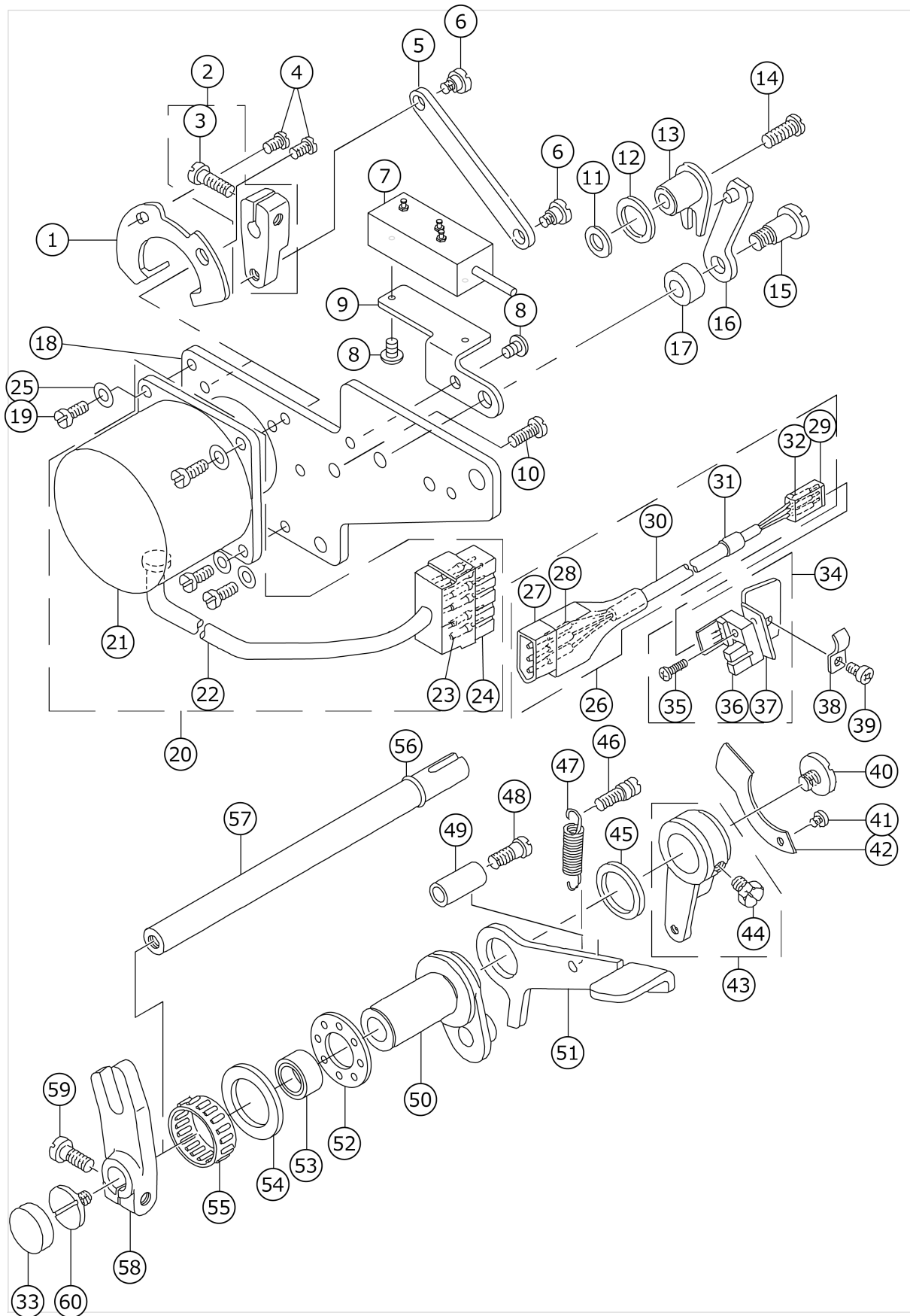


No.	品番	品名	備考	子部品	消耗品	個数
1	11216157	WALKING FOOT DRIVING ROD ASM.				1.00
2	B1609804B00	NEEDLE BEARING				1.00
3	11216009	WALKING FOOT DRIVING CAM				1.00
4	11216652	VERTICAL ARM ASM. FRONT				1.00
5	11216603	DRIVING ARM FRONT		*		1.00
6	SS6121250TP	SCREW 3/16-28 L=11.5		*		1.00
7	11216801	DRIVING PRESSER ARM				1.00
8	SD0640451TP	HINGE SCREW D=6.35 H=4.5				1.00
9	NS6620310SP	NUT 3/16-32				1.00
10	RE0700000K0	E-RING 7				1.00
11	11216504	DRIVING SHAFT BUSHING				1.00
12	11216405	WALKING FOOT DRIVING SHAFT				1.00
13	SS6090630SP	SCREW 9/64-40 L=6				2.00
14	11210119	THRUST COLLAR				1.00
15	40078218	WALKING FOOT DRIVING ROD ASM.				1.00
16	11210200	WALKING FOOT DRIVING ROD		*		1.00
17	SS7090910TP	SCREW 9/64-40 L=8.5		*		1.00
18	22911101	WALKING FOOT PIN C		*		1.00
19	SS7110570SP	SCREW 11/64-40 L=4.8				1.00
20	11214301	ROLLER				1.00
21	11214152	LEVEL ARM ASM. (LOWER)				1.00
22	11214103	FEED ROCKER SHAFT CRANK LOWER		*		1.00
23	SS6121220TP	SCREW 3/16-28 L=11.5		*		1.00
24	NS6120310SP	NUT 3/16-28				1.00
25	11216702	DRIVING ROLLER				1.00
26	SS8120410SP	SCREW 3/16-28 L=3.8				1.00
27	TA0850604R0	RUBBER PLUG				1.00
28	11214608	FEED ROCKER BAR BUSHING				1.00
29	11214400	FEED ROCKER SHAFT				1.00
30	SS8150410TP	SCREW 15/64-28 L=4.0				1.00
31	11214756	HORIZONTAL BAR ASM.				1.00
32	11215118	ROLLER				2.00
33	RC0330415KP	SNAP RING				2.00
34	11215019	ROLLER SHAFT				1.00
35	RC0330415KP	SNAP RING				2.00
36	11214806	PIN				1.00
37	11214905	WALKING FOOT MOUNT				1.00
38	B3026490B00	WALKING FOOT B				1.00
39	SS6110610TP	SCREW 11/64-40 L=6				1.00
40	11214509	BUSHING				1.00
41	B3016450000A	PIN				1.00
42	SS6121220TP	SCREW 3/16-28 L=11.5				1.00
43	11214004	FEED ROCKER SHAFT CRANK UPPER				1.00
44	11211000	ROCK SHAFT BUSHING FRONT				1.00
45	CS120101BSH	THRUST COLLAR ASM.				2.00
46	SS8660410SP	SCREW 1/4-40 L=4.2		*		4.00
47	SS8120740SP	SCREW 3/16-28 L=7				1.00
48	11210804	WALKING FOOT ROCK SHAFT				1.00
49	11210754	WALKING FOOT ARM ASM.				1.00
50	11210705	WALKING FOOT ARM		*		1.00



51	SS6121220TP	SCREW 3/16-28 L=11.5		*		1.00
52	11210051	LEVEL CAM ASM.				1.00
53	SS8660530TP	SCREW 1/4-40 L=4.5		*		2.00
54	11210002	CAM		*		1.00
55	22911002	WALKING FOOT PIN B				1.00
56	SS8120740SP	SCREW 3/16-28 L=7				2.00
57	22910905	WALKING FOOT PIN A				2.00
58	11210325	WALKING FOOT ADJUSTING LINK				1.00
59	SS4090815SP	SCREW 9/64-40 L=8				2.00
60	11210507	WALKING FOOT FULCRUM SHAFT A				1.00
61	11210408	WALKING FOOT ADJUSTING PIN				1.00
62	NS6620310SP	NUT 3/16-32				1.00
63	11210614	FULCRUM SHAFT B				1.00
64	11210903	ROCK SHAFT BUSHING REAR				1.00
65	11216306	DRIVING ARM REAR				1.00
66	SS6121220TP	SCREW 3/16-28 L=11.5				1.00
67	B412352200B	NEEDLE ROLLAR				1.00
68	NM6040001SD	NUT M4				1.00
69	11214202	WALING FOOT HORIZONTAL LOWER				1.00
70	SS7090910TP	SCREW 9/64-40 L= 8.5				1.00
71	40089548	CONNECTING LINK B				4.00

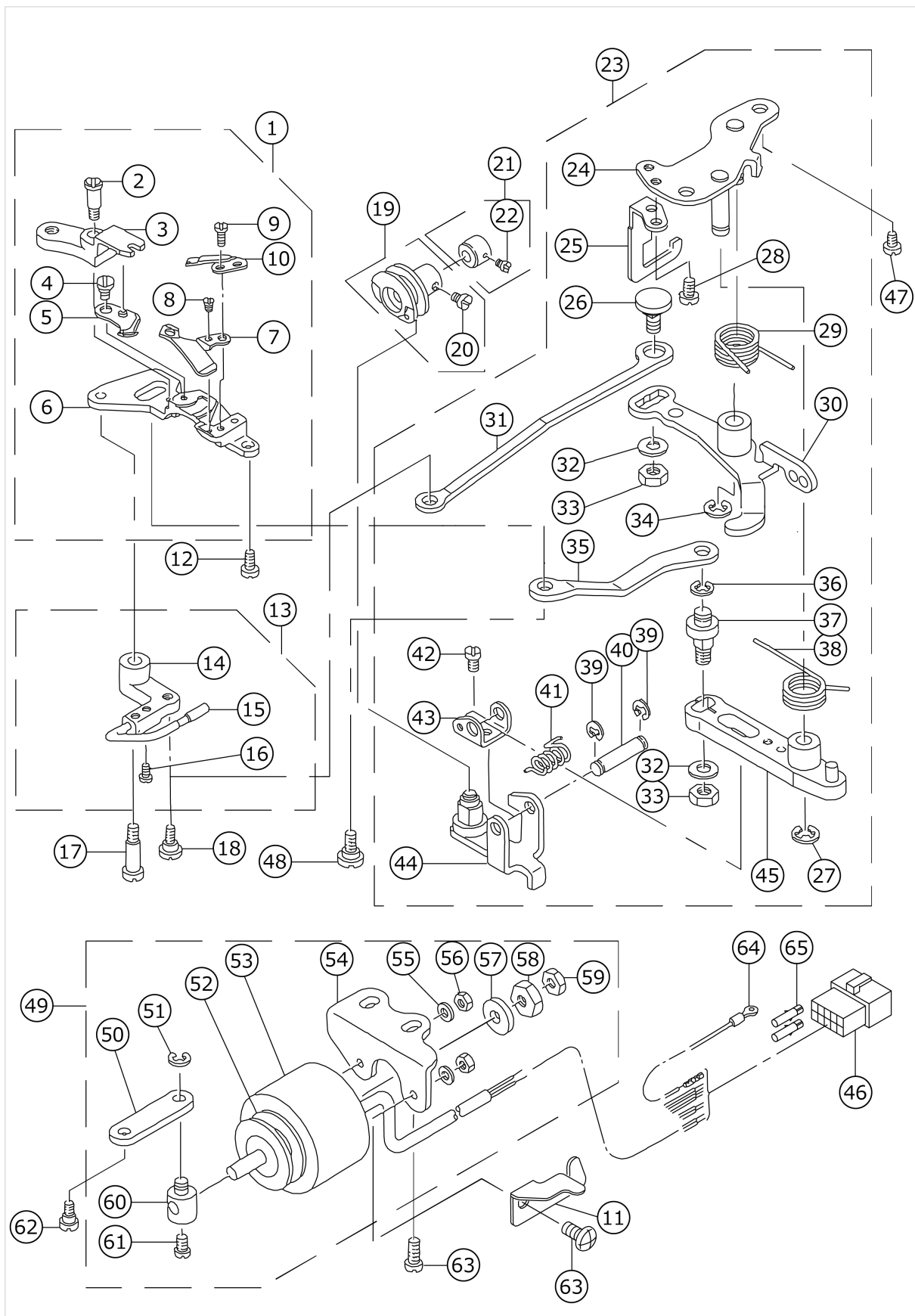
# TOP FEED MECHANISM & MOTOR COMPONENTS



No.	品番	品名	備考	子部品	消耗品	個数
1	11274701	MOTOR ARM STOPPER				1.00
2	11274552	MOTOR ARM ASM.				1.00
3	SS6121010SP	SCREW 3/16-28 L=10		*		1.00
4	SS4110615SP	SCREW 11/64-40 L=6				2.00
5	11274602	MOTOR LINK				1.00
6	SD0640321SP	HINGE SCREW D=6.35 H=3.2				2.00
7	40034156	POTENTIOMETER ASM.				1.00
8	SS4110615SP	SCREW 11/64-40 L=6				3.00
9	40032986	POTENTIOMETER BASE				1.00
10	SS4120915SP	SCREW 3/16-28 L=9				1.00
11	11273505	BRANCH SPACER				1.00
12	11273307	OIL SEAL				1.00
13	11273158	POTENTIOMETER CRANK ASM.				1.00
14	SS7121410SP	SCREW 3/16-28 L=14				1.00
15	SD0870401SP	HINGE SCREW D=8.73 H=4				1.00
16	11272952	POTENTIOMETER ARM ASM.				1.00
17	11273000	POTENTIOMETER ARM COLLAR				1.00
18	11274313	STEPPING MOTOR BASE				1.00
19	SS4110915TP	SCREW 11/64-40 L=9				4.00
20	11281458	STEPPING MOTOR				1.00
21	HM001020000	PULSE MOTOR		*		1.00
22	E8760452M00	TUBE		*		0.62
23	HK034610060	HOUSING 6P		*		1.00
24	HK03464000B	PIN CONTACT		*		6.00
25	WP0460556SD	WASHER 4.6X7.5X0.5				4.00
26	11281557	TRUNK CORD ASM.				1.00
27	HK034610040	HOUSING		*		1.00
28	HK03464000B	PIN CONTACT		*		3.00
29	HK011610030	3-POLE CONNECTOR		*		1.00
30	HW000880030	TUBE		*		1.10
31	E8760452G00	TUBE		*		0.02
32	HK011640000	PIN CONTACT		*		3.00
33	TA1750502R0	RUBBER PLUG D=17.5 L=5				1.00
34	11274859	SENSOR ASM.				1.00
35	SL4031081SF	SCREW M3 L=10		*		1.00
36	HD000570000	SENSOR		*		1.00
37	11274800	SENSOR BASE		*		1.00
38	D2611555B00A	CABLE HOLDER				1.00
39	SS4110615SP	SCREW 11/64-40 L=6				1.00
40	SS7620750SP	SCREW 3/16-32 L=6.5				1.00
41	SS4110615SP	SCREW 11/64-40 L=6				1.00
42	11274206	SENSOR PLATE				1.00
43	11274156	WALKING FOOT LEVER ARM ASM.				1.00
44	SS9660910SP	SCREW 1/4-40 L=9.4		*		1.00
45	11272408	THRUST COLLAR				1.00
46	11272614	FEED SPRING HOOK				1.00
47	11272507	SPRING				1.00
48	SS6121840SP	SCREW 3/16-28 L=18				1.00
49	11100500	REVERSE FEED LEVER STOPPER				1.00
50	11272051	LEVER BASE ASM.				1.00

51	11280401	FEED CONTROL LEVER				1.00
52	B1211980000	UPPER SHAFT THRUST BEARING				1.00
53	B1641490000	OIL SEAL				1.00
54	B1242980000	THRUST WASHER SMALL				1.00
55	B1644490000	NEEDLE BEARING				1.00
56	RO069180100	RUBBER RING				1.00
57	11274008	LEVER SHAFT				1.00
58	11211109	WALKING FOOT ADJUSTING ARM				1.00
59	SS6121250TP	SCREW 3/16-28 L=11.5				1.00
60	SS7620750SP	SCREW 3/16-32 L=6.5				1.00

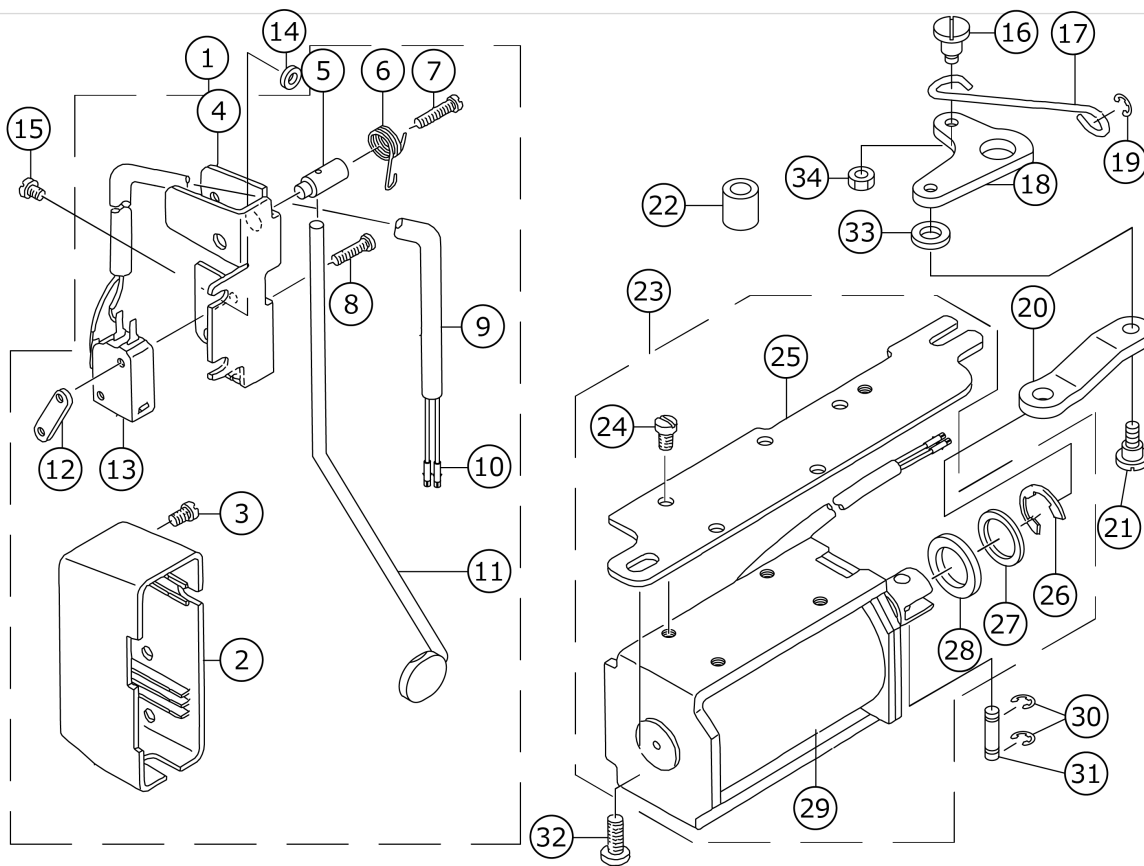
# THREAD TRIMMER COMPONENTS



No.	品番	品名	備考	子部品	消耗品	個数
1	11232055	KNIFE UNIT				1.00
2	SD0460703TP	HINGE SCREW D=4.6 H=7		*		1.00
3	11232105	FORKED BASE FOR KNIFE		*		1.00
4	SD0500095TH	HINGE SCREW D= 5 H= 0.85		*		1.00
5	11040052	MOVING KNIFE ASM.		*		1.00
6	22947907	KNIFE MOUNTING BASE		*		1.00
7	11040201	THREAD GUIDE FOR KNIFE		*		1.00
8	SS2060210SP	SCREW 3/32-56 L=2.3		*		1.00
9	SS4080620TP	SCREW 1/8-44 L=6		*		2.00
10	D2406555D0H	COUNTER KNIFE		*		1.00
11	22962708	TUBE HOLDER LOWER				1.00
12	SS4110715SP	SCREW 11/64-40 L=7				1.00
13	22950257	PICKER ARM ASM.				1.00
14	22950208	PICKER ARM		*		1.00
15	22950356	HOOK THREAD PRESSER ASM.		*		1.00
16	SS6090510SP	SCREW 9/64-40 L=5		*		2.00
17	SD0641451SP	HINGE SCREW D= 6.35 H=14.5				1.00
18	SD0630275SP	HINGE SCREW D= 6.35 H=2.7				1.00
19	22950851	THREAD TRIMMER CAM ASM.				1.00
20	SS6660610TP	SCREW 1/4-40 L=6		*		2.00
21	11042959	CAM COLLAR ASM.				1.00
22	SS8110520TP	SCREW 11/64-40 L=4.5		*		1.00
23	22949762	THREAD TRIMMER DRIVING UNIT				1.00
24	22949754	BASE PLATE ASM.		*		1.00
25	22950703	DRIVING ARM STOPPER		*		1.00
26	22950000	PICKER LINK PIN		*		1.00
27	RE0600000K0	E-RING 6		*		1.00
28	SS4110715SP	SCREW 11/64-40 L=7		*		2.00
29	22949408	CLUTCH SPRING		*		1.00
30	40087245	CLUTCH PLATE ASM.		*		1.00
31	22950109	PICKER LINK		*		1.00
32	WP0621016SH	WASHER		*		2.00
33	NS6150430SP	NUT 15/64-28		*		2.00
34	RE0600000K0	E-RING 6		*		1.00
35	22948301	MOVING KNIFE LINK		*		1.00
36	RE0500000K0	E-RING		*		1.00
37	22948400	MOVING KNIFE LINK PIN		*		1.00
38	22949309	KNIFE RETURN SPRING B		*		1.00
39	RE0400000K0	E-RING 4		*		2.00
40	22949101	ROLLER FULCRUM SHAFT		*		1.00
41	22949200	ROLLER RETURN SPRING		*		1.00
42	SS7090610SP	SCREW 9/64-40 L=6		*		1.00
43	22949002	ROLLER ARM SEAT		*		1.00
44	11040953	ROLLER ARM ASM.		*		1.00
45	11040854	KNIFE DRIVING ARM ASM.		*		1.00
46	HK034610140	HOUSING 14P				1.00
47	SS4150915SP	SCREW 15/64-28 L=9				2.00
48	SD0640631TP	HINGE SCREW D=6.35 H=6.3				1.00
49	11043957	SOLENOID UNIT				1.00
50	11042207	CLUTCH LINK		*		1.00

51	RE0500000K0	E-RING		*		1.00
52	11043205	SOLENOID RUBBER A		*		1.00
53	11043908	THREAD TRIMMER SOLENOID		*		1.00
54	11043403	SOLENOID BASE		*		1.00
55	WP0450000SD	WASHER 4.5X8X0.5		*		2.00
56	NM6040000SN	NUT M4		*		2.00
57	11043304	SOLENOID RUBBER		*		1.00
58	NS6660410SH	NUT		*		1.00
59	NS6660430SP	NUT 1/4-40		*		1.00
60	11043007	SOLENOID PIN		*		1.00
61	SS6110710TP	SCREW 11/64-40 L=6.5		*		1.00
62	SD0600361SP	HINGE SCREW D=6 H=3.6				1.00
63	SS4151215SP	SCREW 15/64-28 L=12				2.00
64	11044054	GROUND WIRE ASM.				1.00
65	HK03464000B	PIN CONTACT				2.00

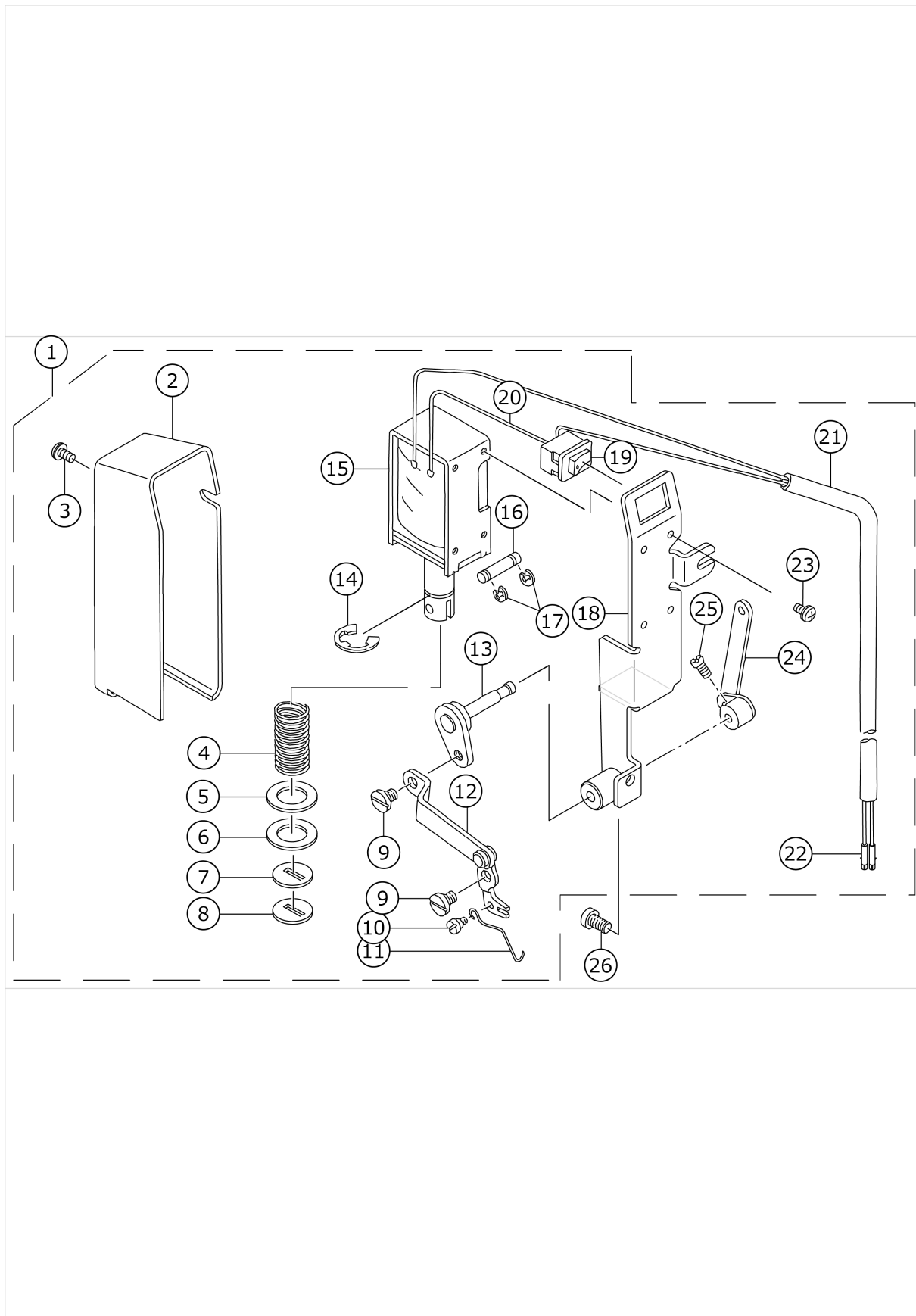
# AUTOMATIC REVERSE FEED COMPONENTS





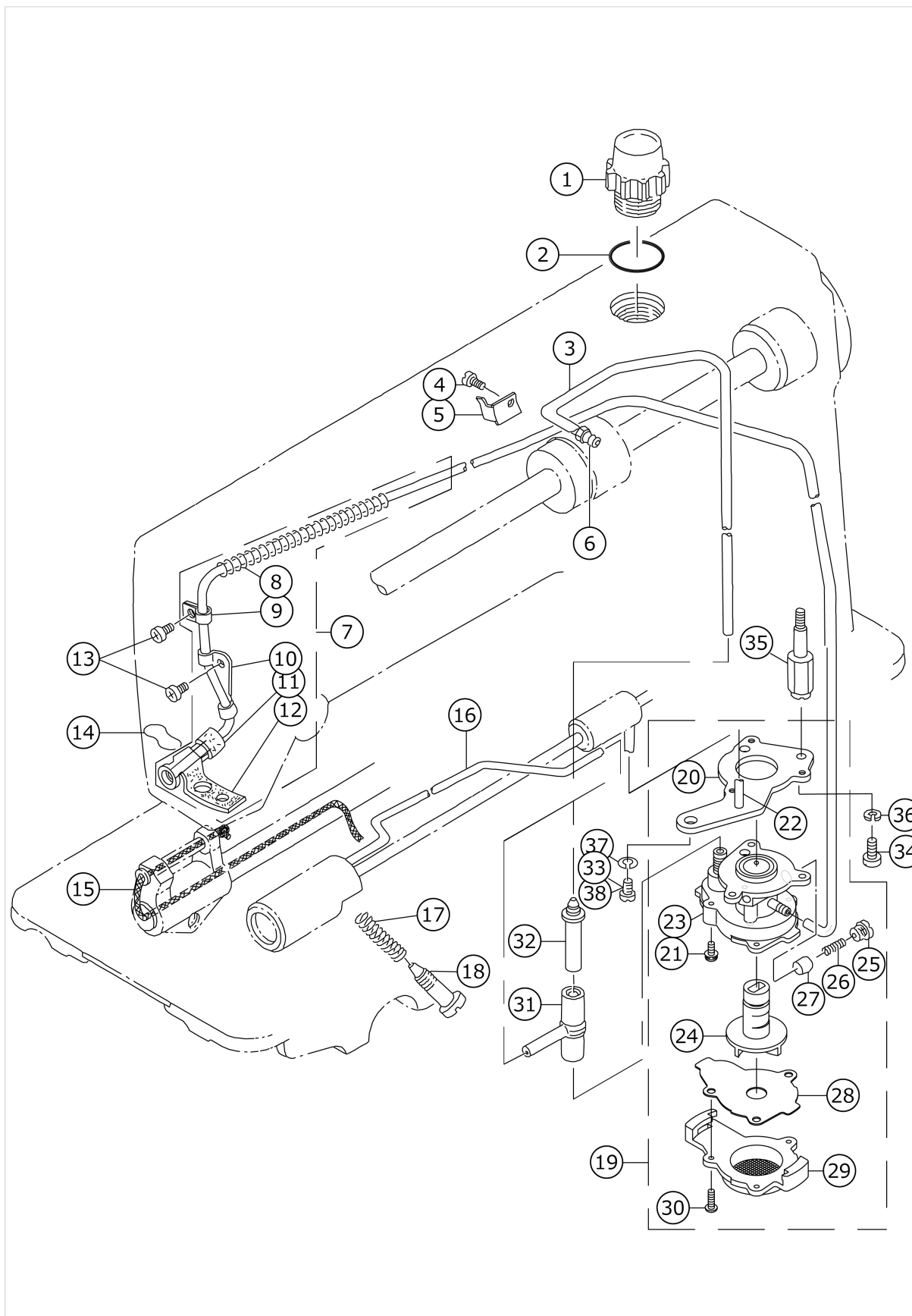
No.	品番	品名	備考	子部品	消耗品	個数
1	11257755	REVERSE FEED SWITCH ASM.				1.00
2	22954606	REVERSE FEED SWITCH COVER		*		1.00
3	SM4040655SP	SCREW		*		1.00
4	22954101	REVERSE FEED SWITCH BASE		*		1.00
5	22954200	REVERSE FEED SWITCH SHAFT		*		1.00
6	22954309	REVERSE FEED SWITCH SPRING		*		1.00
7	SM4041655SP	SCREW		*		1.00
8	SM4031501SC	SCREW M3 L=15		*		2.00
9	HW500070000	2-CORE CABTYRE CORD		*		1.31
10	HK03464000B	PIN CONTACT		*		2.00
11	11257607	REVERSE FEED CONTROL LEVER		*		1.00
12	11102308	MICRO SWITCH PLATE		*		1.00
13	HA001900000	MICROSWITCH		*		1.00
14	WP0553216SD	WASHER	FOR DLU-5494N-7-0B			1.00
15	SS4120915SP	SCREW 3/16-28 L=9				1.00
16	SD0700451TP	HINGE SCREW D=7 H=4.5				1.00
17	11101300	REVERSE FEED CONNECTING SHAFT				1.00
18	11101508	REVERSE FEED LINK				1.00
19	RE0500000KP	E-RING 5				1.00
20	22962500	SOLENOID CONNECTING LINK				1.00
21	SD0700711TP	HINGE SCREW D=7 H=7.1				1.00
22	22962609	REVERSE FEED BASE COLLAR				1.00
23	40108027	SOLENOID MOUNTING BASE ASM.				1.00
24	SS7110740TP	SCREW 11/64-40 L=7		*		4.00
25	40107992	SOLENOID INSTALLING PLATE		*		1.00
26	RE1200000K0	E-RING 12		*		1.00
27	WP1703001SC	WASHER 17X30X3		*		1.00
28	D2468555B00	RUBBER PLUNGER		*		1.00
29	40090751	REVERSE FEED SOLENOID		*		1.00
30	RE0400000K0	E-RING 4				2.00
31	D2464555B00	LINK DRIVING MAGNET PIN				1.00
32	SS4150915SP	SCREW 15/64-28 L=9				1.00
33	WP0722316SH	WASHER				1.00
34	NS6110420SP	NUT 11/64-40				1.00

# WIPER COMPONENTS



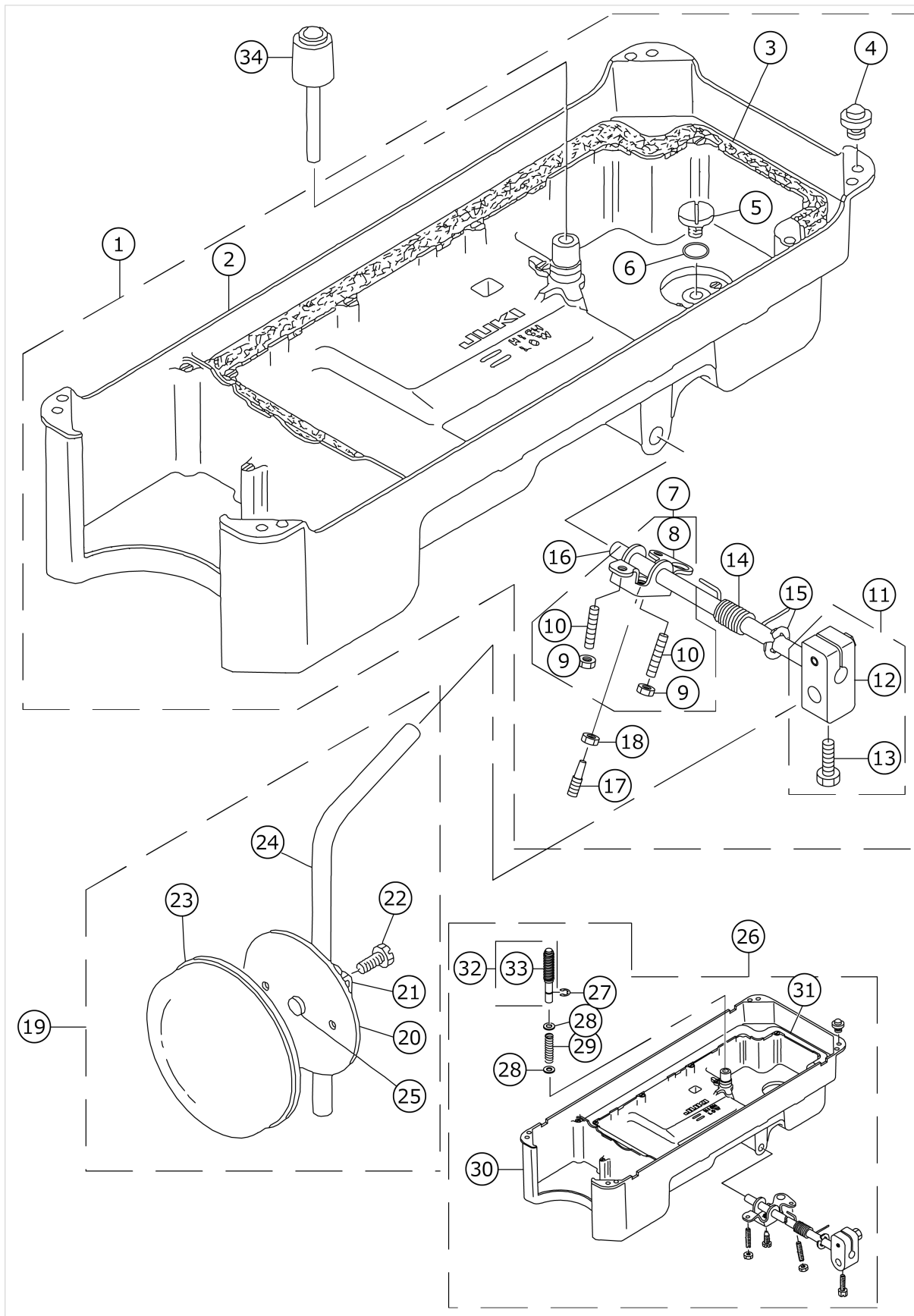
No.	品番	品名	備考	子部品	消耗品	個数
1	11258159	WIPER ASM.				1.00
2	11258001	WIPER COVER		*		1.00
3	SL4030621SS	SCREW M3		*		1.00
4	11233400	SPRING		*		1.00
5	WP1221016SP	WASHER		*		1.00
6	11234408	SOLENOID RUBBER		*		1.00
7	11233301	STOPPER RUBBER		*		1.00
8	11234606	STOPPER RUBBER WASHER		*		1.00
9	SD0550212TP	HINGE SCREW D=5.5 H=2.1		*		2.00
10	SS7090410SP	SCREW 9/64-40 L=3.5		*		1.00
11	D2104490D00	WIPER		*		1.00
12	11234150	WIPER DRIVING LINK ASM.		*		1.00
13	11233657	WIPER LEVER A ASM.		*		1.00
14	RE0900000K0	E-RING 9		*		1.00
15	11233202	WIPER SOLENOID		*		1.00
16	11234507	PLUNGER CONNECTING PIN		*		1.00
17	RE0300000K0	E-RING 3		*		2.00
18	11233053	WIPER INSTALLING BASE ASM.		*		1.00
19	HA000590000	POWER SWITCH		*		1.00
20	HW200390000	ELECTRIC WIRE		*		0.05
21	HW500070000	2-CORE CABTYRE CORD		*		1.33
22	HK03464000B	PIN CONTACT		*		2.00
23	SL4030641SE	SCREW		*		4.00
24	11233251	WIPER LEVER B ASM.		*		1.00
25	SS6110710TP	SCREW 11/64-40 L=6.5		*		2.00
26	SS4121015SP	SCREW 3/16-28 L=10				1.00

# OIL LUBRICATION COMPONENTS



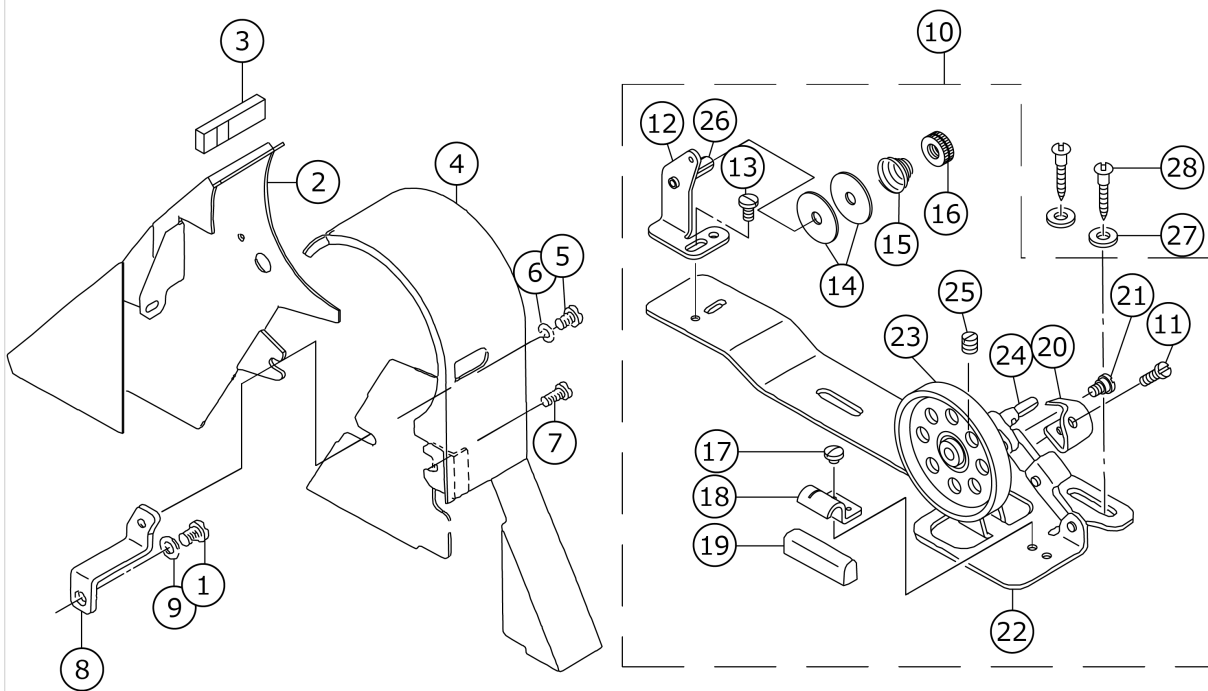
No.	品番	品名	備考	子部品	消耗品	個数
1	22947006	OIL SIGHT WINDOW				1.00
2	RO195240100	RUBBER RING				1.00
3	BT0600402EA	OIL TUBE				0.30
4	SS6080340SP	SCREW 1/8-44 L=2.9				1.00
5	11222007	HOLDER				1.00
6	SQ1150501SD	CONNECTING SCREW				1.00
7	11221652	OIL TUBE ASM.				1.00
8	B3404122000	SPRING		*		1.00
9	B3536122000	HOLDER		*		1.00
10	11221801	HOLDER A		*		1.00
11	11221702	FELT B		*		1.00
12	11221603	FELT A		*		1.00
13	SS4120615SP	SCREW 3/16-28 L=6				2.00
14	11221900	OIL FELT PRESSER				1.00
15	CQ252000000	OIL WICK				0.21
16	11021300	OIL TUBE				1.00
17	22924906	OIL REGULATOR SCREW SPRING				1.00
18	22925002	OIL REGULATOR SCREW				1.00
19	22923056	OIL PUMP ASM.				1.00
20	22923312	OIL PUMP INSTALLING BASE		*		1.00
21	SL4030851SF	SCREW M3 L=8		*		3.00
22	22923908	HOOK DRIVING SHAFT OILING PIPE		*		1.00
23	22923015	OIL PUMP		*		1.00
24	22923700	IMPELLER		*		1.00
25	22923502	PLUNGER SCREW		*		1.00
26	22923601	PLUNGER SPRING		*		1.00
27	22923403	PLUNGER		*		1.00
28	22923809	PUMP BODY SUPPORT PLATE		*		1.00
29	22923205	PUMP BODY COVER		*		1.00
30	SE4301041SR	SCREW D=3 L=10		*		3.00
31	22924609	RUBBER JOINT				1.00
32	11221504	OIL TUBE JOINT				1.00
33	SS4151215SP	SCREW 15/64-28 L=12	FOR DLU-5494N-7-0B,-WB			1.00
34	SS6111010TP	SCREW 11/64-40 L=9.5				1.00
35	11231503	OIL PUMP SUPPORT				1.00
36	WS0451040KP	SPRING WASHER 4.5X8.5X1	FOR DLU-5494N-7-0B,-WB			1.00
37	WS0651310KP	SPRING WASHER 6.5X11X1.3	FOR DLU-5494N-7-0B,-WB			1.00
38	SS4150915SP	SCREW 15/64-28 L=9	FOR DLU-5494N-7-00,-W0			1.00

# OIL RESERVOIR COMPONENTS



No.	品番	品名	備考	子部品	消耗品	個数
1	11047057	OIL RESERVOIR ASM.				1.00
2	11023017	OIL RESERVOIR		*		1.00
3	11024700	GASKET		*		1.00
4	11047107	RUBBER CUSHION		*		4.00
5	SS6700710SH	SCREW 5/16-24 L=7		*		1.00
6	RO098240100	RUBBER RING		*		1.00
7	22932156	KNEE LIFTER ROTATION ARM ASM.		*		1.00
8	11024015	CONNECTING ROT VERTICAL		*		1.00
9	NM6060001SE	NUT M6		*		2.00
10	SM8063012TR	SCREW M6 L=30		*		2.00
11	22932453	BRACKET ASM.		*		1.00
12	11024510	BRACKET		*		1.00
13	SM9062053SR	SCREW M6 L=20		*		2.00
14	22932206	SPRING		*		1.00
15	RE1000000K0	E-RING 10		*		1.00
16	22932305	KNEE PRESS CROSS SHAFT		*		1.00
17	SM9061853SR	SCREW M6 L=17.5		*		1.00
18	NM6060001SE	NUT M6		*		1.00
19	11023751	KNEE PRESS PLATE ASM.				1.00
20	11023702	KNEE PRESS PLATE		*		1.00
21	11023801	KNEE PRESS PLATE HOLDER		*		1.00
22	SM9061203SE	SCREW M6 L=12		*		1.00
23	B3431552000A	KNEE PRESS PLATE COVER		*		1.00
24	B3419122000	KNEE LIFTER PLATE ROD		*		1.00
25	11024403	RUBBER		*		1.00
26	11141454	OIL RESERVOIR ASM.	FOR JE			1.00
27	RE0400000K0	E-RING 4		*		1.00
28	WP0621016SD	WASHER 6.2X13X1		*		2.00
29	GAK30005000	SPRING		*		1.00
30	11141413	OIL RESERVOIR		*		1.00
31	11141900	GASKET		*		1.00
32	GAK300010B0	KNEE PRESS LIFTER ROD ASM.		*		1.00
33	GAK30004000	KNEE PRESS LIFTER ROD RUBBER		*		1.00
34	22931703	KNEE LIFTER PUSH ROD				1.00

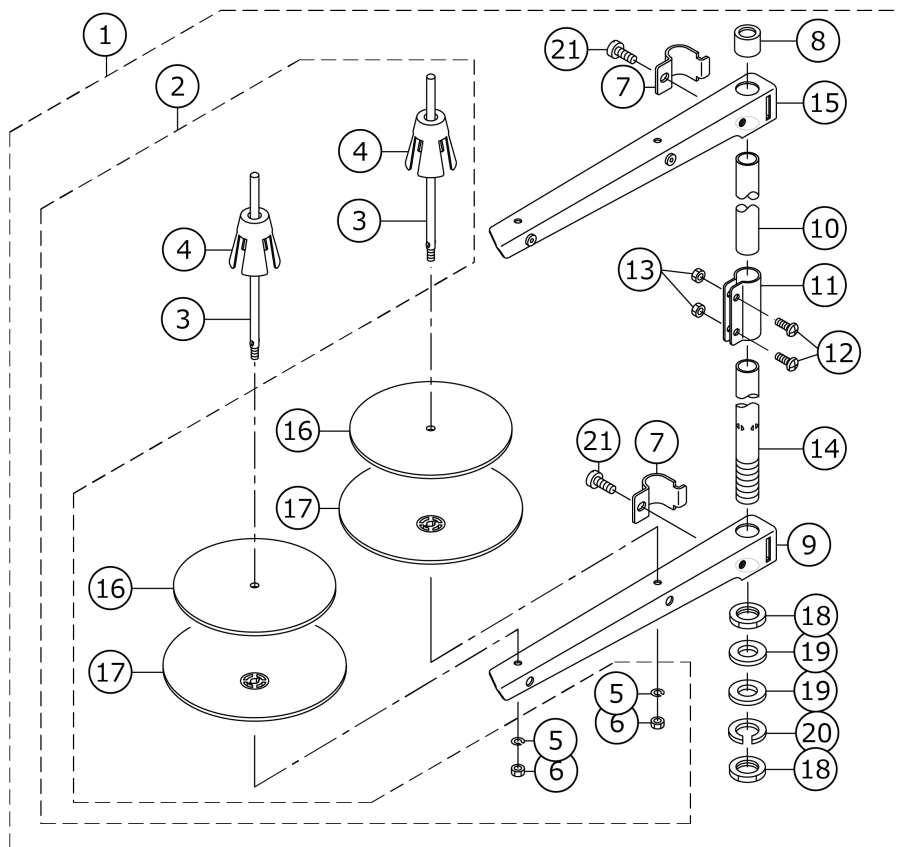
# BELT COVER & BOBBIN WINDER COMPONENTS





No.	品番	品名	備考	子部品	消耗品	個数
1	SS4150715SP	SCREW 15/64-28 L=7				1.00
2	11280609	BELT COVER A				1.00
3	11222908	COVER FELT				1.00
4	11280708	BELT COVER B				1.00
5	SS7110710SP	SCREW 11/64-40 L=7				1.00
6	WP0621016SD	WASHER 6.2X13X1				1.00
7	SS7701010SP	SCREW 5/16-24 L=10				1.00
8	11278306	BELT COVER STAY				1.00
9	WP0480856SP	WASHER 4.8X8.4X0.8				1.00
10	22927354	BOBBIN WINDER COMPL.				1.00
11	SS7081310SP	SCREW 1/8-44 L=12.5		*		1.00
12	22928501	THREAD TENSION POST BASE		*		1.00
13	SS4110515SP	SCREW 11/64-40 L=5		*		1.00
14	22928907	THREAD TENSION DISK		*		2.00
15	22929004	THREAD TENSION SPRING		*		1.00
16	22928808	NUT		*		1.00
17	SS7110350SP	SCREW 11/64-40 L=3.5		*		1.00
18	22928402	CONTROL RUBBER HOLDING PLATE		*		1.00
19	22928303	CONTROL RUBBER		*		1.00
20	22928105	BOBBIN PRESSER		*		1.00
21	SD0490261SP	HINGE SCREW D=4.9 H=2.6		*		1.00
22	22927305	BOBBIN WINDER BASE		*		1.00
23	22927404	BOBBIN WINDER		*		1.00
24	22927602	BOBBIN WINDER SPINDLE		*		1.00
25	SS8110510SP	SCREW 11/64-40 L=5		*		1.00
26	22928709	THREAD TENSION POST		*		1.00
27	WP0450826SC	WASHER 4.5X10X0.8				2.00
28	SK3412000SC	WOOD SCREW D=4.1 L=20				2.00

# THREAD STAND COMPONENTS



No.	品番	品名	備考	子部品	消耗品	個数
1	22930358	THREAD STAND ASM.				1.00
2	40062684	SPOOL PIN ASM.		*		1.00
3	22931000	SPOOL PIN		*		2.00
4	22931109	SPOOL RETAINER		*		2.00
5	WS0510002KN	SPRING WASHER		*		2.00
6	NM6050001SE	NUT M5		*		2.00
7	22930705	THREAD GUIDE ARM JOINT		*		2.00
8	22931406	SPOOL REST ROD RUBBER CAP		*		1.00
9	22930507	SPOOL REST ARM		*		1.00
10	22930408	SPOOL REST ROD UPPER		*		1.00
11	22931307	SPOOL REST ROD JOINT		*		1.00
12	SM4051405SE	SCREW M5 L=14		*		2.00
13	NM6050001SE	NUT M5		*		2.00
14	22930309	SPOOL REST ROD LOWER		*		1.00
15	22930556	THREAD STANDING ARM ASM.		*		1.00
16	22930903	SPOOL REST CUSHION		*		2.00
17	22930804	SPOOL REST		*		2.00
18	NM6160511SE	NUT M16X1.5		*		2.00
19	WP1612616SE	WASHER 16X30X2.6		*		2.00
20	WS1643202KR	SPRING WASHER		*		1.00
21	SM6061610SC	SCREW M6 L=16		*		2.00

# LIST FOR INFORMATION OF CHANGE (1)

As to the place changed, refer to the corresponding Rev.No.  
 When previous parts(Obsoleted part)and new parts(Added parts)are  
 not interchangeable with each other:  
 In this case, even obsoleted parts(D.)can be ordered with the  
 obsoleted part number, so select the parts with changed dates and  
 place your orders.

変更箇所は、該当Rev.No.版をご参照ください。

部品の互換性がない変更の場合は、削除された品番でも、ご注文できます。

29122108

No.0912-~~07~~・・・Rev.No.

\*A:Added parts追加部品/D:Obsoleted parts削除部品/E:Erratum訂正

* Rev. No.	Page 頁	Ref. No.	Parts No. 品番	* Rev. No.	Page 頁	Ref. No.	Parts No. 品番
D 06	2	81	111-00104	A 07	2	81	400-93432
				A 07	2	97	401-16677
D 06	4	4	110-39070	A 07	4	4	229-18072
D 06	4	5	110-39062	A 07	4	5	229-18064
D 06	4	6	B1905-541-B00	A 07	4	9	229-18403
				A 07	4	10	229-18502
				A 07	4	11	229-18601
				A 07	4	12	229-18700
D 06	4	7	110-05204	A 07	4	7	229-18106
D 06	4	8	B1408-552-000	A 07	4	8	229-06606
D 06	4	9	B1903-552-000	A 07	4	6	229-18304
D 06	4	10	112-02173	A 07	4	13	400-95789
D 06	4	21	110-02508	A 07	4	21	401-05231
D 06	8	6	110-06350	A 07	8	9	229-08156
				A 07	8	6	112-71053
D 06	8	8	110-06905	A 07	8	8	229-08305
D 06	10	31	110-08703	A 07	10	31	400-89548
D 06	10	32	110-08604	A 07	10	32	400-93417
				A 07	12	52	112-10051
D 06	12	54	110-08703	A 07	12	71	400-89548
D 06	16	13	110-42553	A 07	16	13	229-50257
D 06	16	14	110-42504	A 07	16	14	229-50208
D 06	16	15	110-42652	A 07	16	15	229-50356
D 06	17	2	110-72501	A 07	17	2	229-54606
D 06	17	4	111-02001	A 07	17	4	229-54101
D 06	17	5	111-02100	A 07	17	5	229-54200
D 06	17	6	111-02209	A 07	17	6	229-54309
D 06	17	23	112-28459	A 07	17	23	401-08027
D 06	17	25	112-27600	A 07	17	25	401-07992
D 06	17	29	112-28400	A 07	17	29	400-90751
D 06	17	30	HK-0346400-0B				
D 06	22	6	RO-1082401-00	A 07	22	6	RO-0982401-00
				A 07	22	7	229-32156
D 06	22	8	110-24106	A 07	22	14	229-32206
				A 07	22	11	229-32453
D 06	22	15	110-24205	A 07	22	16	229-32305



# HOW TO MAKE USE OF THIS PARTS LIST

## 1.Explanation of codes

1)"\*"mark.....means this part is changed from the previous parts book.

As to the details of the change, refer to the "List for information of change".

2)"#01".....refer to "Note" explanation at bottom of page.

## 2.Codes on the "Qty" column

· Each numeral indicates the number of parts required.

· "0.1" and "2.5" indicate the length (in meters) of the respective parts.

3.Parentheses mean that the corresponding part is a subpart that constructs an assembly part.

4.Dotted lines on the Figures indicate assembly parts.

## 1."注記"欄の記号説明

1) "\*"印.....前回のパーツブックに比較して今回変更された部品を意味します。

変更内容は、"変更情報リスト"を参照してください。

2) "#01".....ページ下の"注記"の説明を参照してください。

2.数量欄の数字は、個数を表し、0.1、2.5等の数値は、長さ（単位メートル）を表します。

3.数量欄の（ ）は、組部品を構成している子部品であることを意味します。

4.イラストページの-----枠は、組構成であることを意味します。